



**Property type :** Detached Villa

**Location :** El Campello

**Bedrooms :** 3

**Bathrooms :** 3

**Swimming pool :** Private

**Garden :** Private

**Views :** Sea views

**House area :** 146 m<sup>2</sup>

**Plot area :** 316 m<sup>2</sup>

**Terraces area :** 106 m<sup>2</sup>

**Beach :** 350 m

 Airconditioning

 Solarium

Luxury Custom Villas by the Sea in El Campello, Costa Blanca Exclusive New Build Villas in Venta Lanuza, El Campello Discover an exceptional opportunity to own a fully customizable luxury villa in Venta Lanuza, one of the most tranquil and sought-after areas of El Campello, on the Costa Blanca. Just 350 meters from the Mediterranean Sea, this development offers the perfect blend of modern design, natural beauty, and everyday convenience, making it ideal for both permanent living and holiday escapes.

**Tailor-Made Villas with High-End Features** These exclusive homes are designed for comfort, elegance, and personalization. Choose between single-storey or two-level villas, with plot sizes ranging from 316 m<sup>2</sup> to 803 m<sup>2</sup> and three different layouts available. Key features include:

- Spacious living room of 51 m<sup>2</sup> with large windows for natural light and indoor-outdoor flow
- Three bedrooms of approximately 15 m<sup>2</sup> each with luxury finishes
- Three modern bathrooms with top-quality fittings
- Optional bright basement with direct exterior access for extra living or entertainment space
- Private pool of 21 m<sup>2</sup> perfect for enjoying the Mediterranean climate
- Optional garage and extensive customization options

**Prime Location with Excellent Connectivity** The villas are just a 3-minute walk from the tram station, providing easy access to Alicante, Villajoyosa, and Benidorm. This ensures seamless travel without needing a car, ideal for both residents and visitors.

**Nearby distances include:**

- Alicante Airport – 25 km
- Alicante City Centre – 18 km
- Villajoyosa – 14 km
- Benidorm – 24 km
- Altea – 30 km
- Calpe – 40 km

Various golf courses within 20-30 minutes Shopping centres like La Marina (Finestrat) – 25 minutes

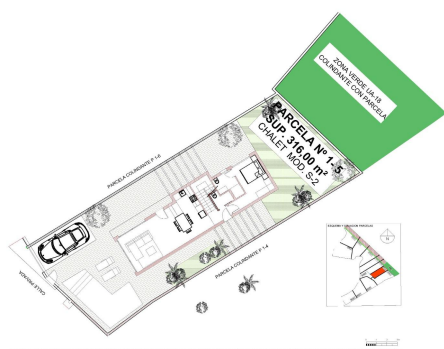
**A Mediterranean Lifestyle in El Campello** El Campello is a coastal town that offers the best of authentic Spanish charm and modern convenience. With clean sandy beaches, local restaurants, bike routes, spas, and pet-friendly beaches, the area is ideal for enjoying an active and relaxed lifestyle.

The villas also boast stunning sea and mountain views, all within a peaceful residential setting that feels both private and well-connected.

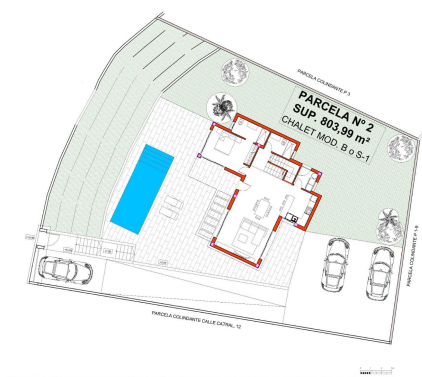
**Start Building Your Dream Today** If you're looking for a luxury villa by the sea with the freedom to personalize every detail, this project in Venta Lanuza is your perfect match.

Contact us now to schedule a visit and start designing your ideal home in the sun.



[illegible]

CUADRO DE SUPERFICIES MCO. S-1		
DESCRIPCION	Superficie	Valor Unit.
<b>PARCELA 1</b>		
Parcela 1	100.00	
Parcela 2	100.00	
Parcela 3	100.00	
Parcela 4	100.00	
Parcela 5	100.00	
Parcela 6	100.00	
Parcela 7	100.00	
Parcela 8	100.00	
Parcela 9	100.00	
Parcela 10	100.00	
Parcela 11	100.00	
Parcela 12	100.00	
Parcela 13	100.00	
Parcela 14	100.00	
Parcela 15	100.00	
Parcela 16	100.00	
Parcela 17	100.00	
Parcela 18	100.00	
Parcela 19	100.00	
Parcela 20	100.00	
Parcela 21	100.00	
Parcela 22	100.00	
Parcela 23	100.00	
Parcela 24	100.00	
Parcela 25	100.00	
Parcela 26	100.00	
Parcela 27	100.00	
Parcela 28	100.00	
Parcela 29	100.00	
Parcela 30	100.00	
Parcela 31	100.00	
Parcela 32	100.00	
Parcela 33	100.00	
Parcela 34	100.00	
Parcela 35	100.00	
Parcela 36	100.00	
Parcela 37	100.00	
Parcela 38	100.00	
Parcela 39	100.00	
Parcela 40	100.00	
Parcela 41	100.00	
Parcela 42	100.00	
Parcela 43	100.00	
Parcela 44	100.00	
Parcela 45	100.00	
Parcela 46	100.00	
Parcela 47	100.00	
Parcela 48	100.00	
Parcela 49	100.00	
Parcela 50	100.00	
Parcela 51	100.00	
Parcela 52	100.00	
Parcela 53	100.00	
Parcela 54	100.00	
Parcela 55	100.00	
Parcela 56	100.00	
Parcela 57	100.00	
Parcela 58	100.00	
Parcela 59	100.00	
Parcela 60	100.00	
Parcela 61	100.00	
Parcela 62	100.00	
Parcela 63	100.00	
Parcela 64	100.00	
Parcela 65	100.00	
Parcela 66	100.00	
Parcela 67	100.00	
Parcela 68	100.00	
Parcela 69	100.00	
Parcela 70	100.00	
Parcela 71	100.00	
Parcela 72	100.00	
Parcela 73	100.00	
Parcela 74	100.00	
Parcela 75	100.00	
Parcela 76	100.00	
Parcela 77	100.00	
Parcela 78	100.00	
Parcela 79	100.00	
Parcela 80	100.00	
Parcela 81	100.00	
Parcela 82	100.00	
Parcela 83	100.00	
Parcela 84	100.00	
Parcela 85	100.00	
Parcela 86	100.00	
Parcela 87	100.00	
Parcela 88	100.00	
Parcela 89	100.00	
Parcela 90	100.00	
Parcela 91	100.00	
Parcela 92	100.00	
Parcela 93	100.00	
Parcela 94	100.00	
Parcela 95	100.00	
Parcela 96	100.00	
Parcela 97	100.00	
Parcela 98	100.00	
Parcela 99	100.00	
Parcela 100	100.00	
Parcela 101	100.00	
Parcela 102	100.00	
Parcela 103	100.00	
Parcela 104	100.00	
Parcela 105	100.00	
Parcela 106	100.00	
Parcela 107	100.00	
Parcela 108	100.00	
Parcela 109	100.00	
Parcela 110	100.00	
Parcela 111	100.00	
Parcela 112	100.00	
Parcela 113	100.00	
Parcela 114	100.00	



CUADRO DE SUPERFICIES MCG. B			
	Superficie	Superficie	Superficie
	en m <sup>2</sup>	en m <sup>2</sup>	en m <sup>2</sup>
<b>K. MONTES</b>			
Montes	1000		
Montes	1000		
Montes	1000		
<b>TOTAL SUPERFICIE MONTES</b>	<b>3000</b>		<b>3000</b>
<b>K. MONTES</b>			
Montes	1000		
Montes	1000		
Montes	1000		
<b>TOTAL SUPERFICIE MONTES</b>	<b>3000</b>		<b>3000</b>
<b>K. MONTES</b>			
Montes	1000		
Montes	1000		
Montes	1000		
<b>TOTAL SUPERFICIE MONTES</b>	<b>3000</b>		<b>3000</b>
<b>SUP. PARCELAS</b>			
P. 1	403.87 m <sup>2</sup>		
P. 2	403.87 m <sup>2</sup>		
P. 3	403.87 m <sup>2</sup>		
P. 4	403.87 m <sup>2</sup>		
P. 5	403.87 m <sup>2</sup>		
P. 6	403.87 m <sup>2</sup>		
P. 7	403.87 m <sup>2</sup>		
P. 8	403.87 m <sup>2</sup>		
P. 9	403.87 m <sup>2</sup>		
P. 10	403.87 m <sup>2</sup>		
P. 11	403.87 m <sup>2</sup>		
P. 12	403.87 m <sup>2</sup>		
P. 13	403.87 m <sup>2</sup>		
P. 14	403.87 m <sup>2</sup>		
P. 15	403.87 m <sup>2</sup>		
P. 16	403.87 m <sup>2</sup>		
P. 17	403.87 m <sup>2</sup>		
P. 18	403.87 m <sup>2</sup>		
P. 19	403.87 m <sup>2</sup>		
P. 20	403.87 m <sup>2</sup>		
P. 21	403.87 m <sup>2</sup>		
P. 22	403.87 m <sup>2</sup>		
P. 23	403.87 m <sup>2</sup>		
P. 24	403.87 m <sup>2</sup>		
P. 25	403.87 m <sup>2</sup>		
P. 26	403.87 m <sup>2</sup>		
P. 27	403.87 m <sup>2</sup>		
P. 28	403.87 m <sup>2</sup>		
P. 29	403.87 m <sup>2</sup>		
P. 30	403.87 m <sup>2</sup>		
P. 31	403.87 m <sup>2</sup>		
P. 32	403.87 m <sup>2</sup>		
P. 33	403.87 m <sup>2</sup>		
P. 34	403.87 m <sup>2</sup>		
P. 35	403.87 m <sup>2</sup>		
P. 36	403.87 m <sup>2</sup>		
P. 37	403.87 m <sup>2</sup>		
P. 38	403.87 m <sup>2</sup>		
P. 39	403.87 m <sup>2</sup>		
P. 40	403.87 m <sup>2</sup>		
P. 41	403.87 m <sup>2</sup>		
P. 42	403.87 m <sup>2</sup>		
P. 43	403.87 m <sup>2</sup>		
P. 44	403.87 m <sup>2</sup>		
P. 45	403.87 m <sup>2</sup>		
P. 46	403.87 m <sup>2</sup>		
P. 47	403.87 m <sup>2</sup>		
P. 48	403.87 m <sup>2</sup>		
P. 49	403.87 m <sup>2</sup>		
P. 50	403.87 m <sup>2</sup>		
P. 51	403.87 m <sup>2</sup>		
P. 52	403.87 m <sup>2</sup>		
P. 53	403.87 m <sup>2</sup>		
P. 54	403.87 m <sup>2</sup>		
P. 55	403.87 m <sup>2</sup>		
P. 56	403.87 m <sup>2</sup>		
P. 57	403.87 m <sup>2</sup>		
P. 58	403.87 m <sup>2</sup>		
P. 59	403.87 m <sup>2</sup>		
P. 60	403.87 m <sup>2</sup>		
P. 61	403.87 m <sup>2</sup>		
P. 62	403.87 m <sup>2</sup>		
P. 63	403.87 m <sup>2</sup>		
P. 64	403.87 m <sup>2</sup>		
P. 65	403.87 m <sup>2</sup>		
P. 66	403.87 m <sup>2</sup>		
P. 67	403.87 m <sup>2</sup>		
P. 68	403.87 m <sup>2</sup>		
P. 69	403.87 m <sup>2</sup>		
P. 70	403.87 m <sup>2</sup>		
P. 71	403.87 m <sup>2</sup>		
P. 72	403.87 m <sup>2</sup>		
P. 73	403.87 m <sup>2</sup>		
P. 74	403.87 m <sup>2</sup>		
P. 75	403.87 m <sup>2</sup>		
P. 76	403.87 m <sup>2</sup>		
P. 77	403.87 m <sup>2</sup>		
P. 78	403.87 m <sup>2</sup>		
P. 79	403.87 m <sup>2</sup>		
P. 80	403.87 m <sup>2</sup>		
P. 81	403.87 m <sup>2</sup>		
P. 82	403.87 m <sup>2</sup>		
P. 83	403.87 m <sup>2</sup>		
P. 84	403.87 m <sup>2</sup>		
P. 85	403.87 m <sup>2</sup>		
P. 86	403.87 m <sup>2</sup>		
P. 87	403.87 m <sup>2</sup>		
P. 88	403.87 m <sup>2</sup>		
P. 89	403.87 m <sup>2</sup>		
P. 90	403.87 m <sup>2</sup>		
P. 91	403.87 m <sup>2</sup>		
P. 92	403.87 m <sup>2</sup>		
P. 93	403.87 m <sup>2</sup>		
P. 94	403.87 m <sup>2</sup>		
P. 95	403.87 m <sup>2</sup>		
P. 96	403.87 m <sup>2</sup>		
P. 97	403.87 m <sup>2</sup>		
P. 98	403.87 m <sup>2</sup>		
P. 99	403.87 m <sup>2</sup>		
P. 100	403.87 m <sup>2</sup>		

